
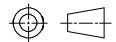
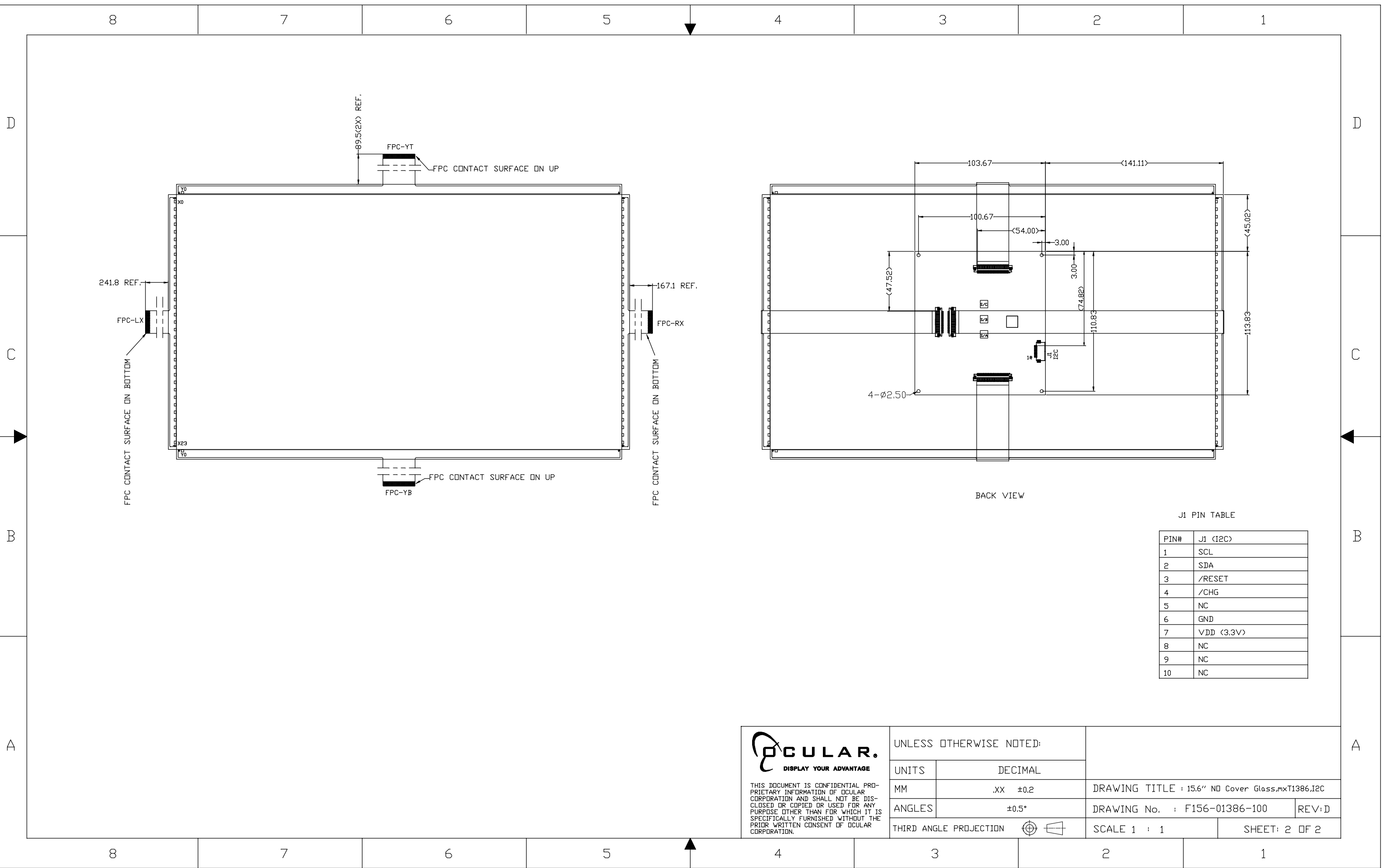


- NOTES:
1. ALL UNITS IN MM.
 2. OPERATING TEMPERATURE: -30°C TO 70°C
 3. STORAGE TEMPERATURE: -30°C TO 80°C
 4. FPC BENDING RADIUS IS R1.0MM MIN
 5. I2C CONNECTOR IS MOLEX 52207-1060 OR EQUIVALENT
 6. ALL ROHS ASSEMBLY
 7. (*) DIMENSION FOR REFERENCE

 <p>OCULAR. DISPLAY YOUR ADVANTAGE</p> <p><small>THIS DOCUMENT IS CONFIDENTIAL PROPRIETARY INFORMATION OF OCULAR CORPORATION AND SHALL NOT BE DISCLOSED OR COPIED OR USED FOR ANY PURPOSE OTHER THAN FOR WHICH IT IS SPECIFICALLY FURNISHED WITHOUT THE PRIOR WRITTEN CONSENT OF OCULAR CORPORATION.</small></p>	UNLESS OTHERWISE NOTED:			
	UNITS	DECIMAL	DRAWING TITLE : 15.6" NO Cover Glass,mxT1386,I2C	
MM	.XX ±0.2	DRAWING No. : F156-01386-100		REV:D
ANGLES	±0.5°	SCALE 1 : 1		SHEET: 1 OF 2
THIRD ANGLE PROJECTION				



BACK VIEW

J1 PIN TABLE

PIN#	J1 (I2C)
1	SCL
2	SDA
3	/RESET
4	/CHG
5	NC
6	GND
7	VDD (3.3V)
8	NC
9	NC
10	NC



THIS DOCUMENT IS CONFIDENTIAL PROPRIETARY INFORMATION OF OCULAR CORPORATION AND SHALL NOT BE DISCLOSED OR COPIED OR USED FOR ANY PURPOSE OTHER THAN FOR WHICH IT IS SPECIFICALLY FURNISHED WITHOUT THE PRIOR WRITTEN CONSENT OF OCULAR CORPORATION.

UNLESS OTHERWISE NOTED:			
UNITS	DECIMAL		
MM	.XX ±0.2	DRAWING TITLE : 15.6" ND Cover Glass,mxT1386,I2C	
ANGLES	±0.5°	DRAWING No. : F156-01386-100	REV:D
THIRD ANGLE PROJECTION		SCALE 1 : 1	SHEET: 2 OF 2