

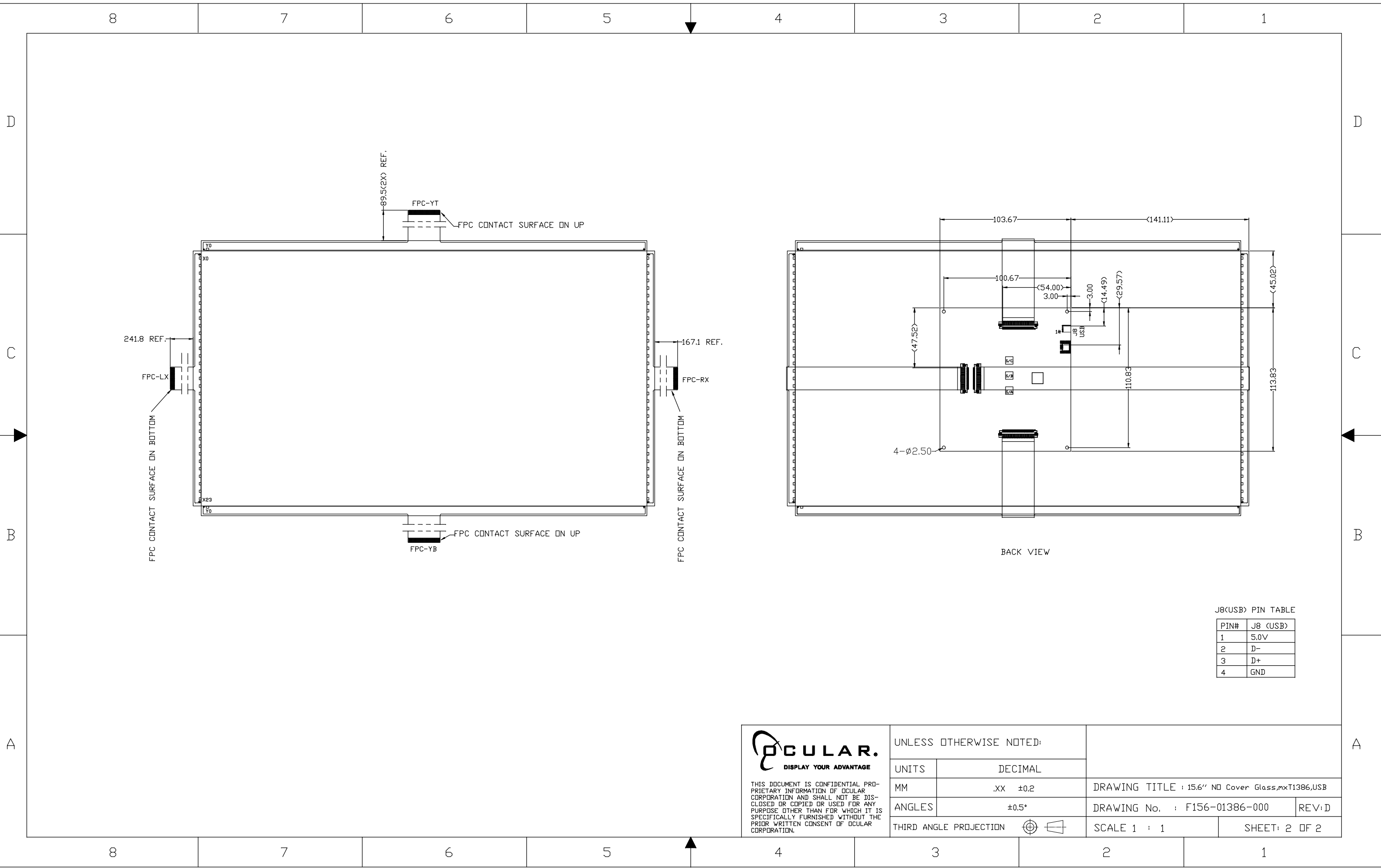
NOTES:

1. ALL UNITS IN MM.
2. OPERATING TEMPERATURE: -30°C TO 70°C
3. STORAGE TEMPERATURE: -30°C TO 80°C
4. FPC BENDING RADIUS IS R1.0MM MIN
5. USB CONNECTOR IS MOLEX 53015-0410 OR EQUIVALENT
6. ALL ROHS ASSEMBLY
7. (\*) DIMENSION FOR REFERENCE

**OCULAR.**  
 DISPLAY YOUR ADVANTAGE

THIS DOCUMENT IS CONFIDENTIAL PROPRIETARY INFORMATION OF OCULAR CORPORATION AND SHALL NOT BE DISCLOSED OR COPIED OR USED FOR ANY PURPOSE OTHER THAN FOR WHICH IT IS SPECIFICALLY FURNISHED WITHOUT THE PRIOR WRITTEN CONSENT OF OCULAR CORPORATION.

UNLESS OTHERWISE NOTED:		
UNITS	DECIMAL	
MM	.XX ±0.2	DRAWING TITLE : 15.6" ND Cover Glass,mxT1386,USB
ANGLES	±0.5°	DRAWING No. : F156-01386-000   REV:D
THIRD ANGLE PROJECTION		SCALE 1 : 1   SHEET: 1 OF 2



J8(USB) PIN TABLE

PIN#	J8 (USB)
1	5.0V
2	D-
3	D+
4	GND

<p><b>OCULAR.</b> DISPLAY YOUR ADVANTAGE</p> <p>THIS DOCUMENT IS CONFIDENTIAL PROPRIETARY INFORMATION OF OCULAR CORPORATION AND SHALL NOT BE DISCLOSED OR COPIED OR USED FOR ANY PURPOSE OTHER THAN FOR WHICH IT IS SPECIFICALLY FURNISHED WITHOUT THE PRIOR WRITTEN CONSENT OF OCULAR CORPORATION.</p>	UNLESS OTHERWISE NOTED:			
	UNITS	DECIMAL	DRAWING TITLE : 15.6" NO Cover Glass,mxT1386,USB	
	MM	.XX ±0.2	DRAWING No. : F156-01386-000	
	ANGLES	±0.5°	REV: D	
THIRD ANGLE PROJECTION			SCALE 1 : 1	SHEET: 2 OF 2